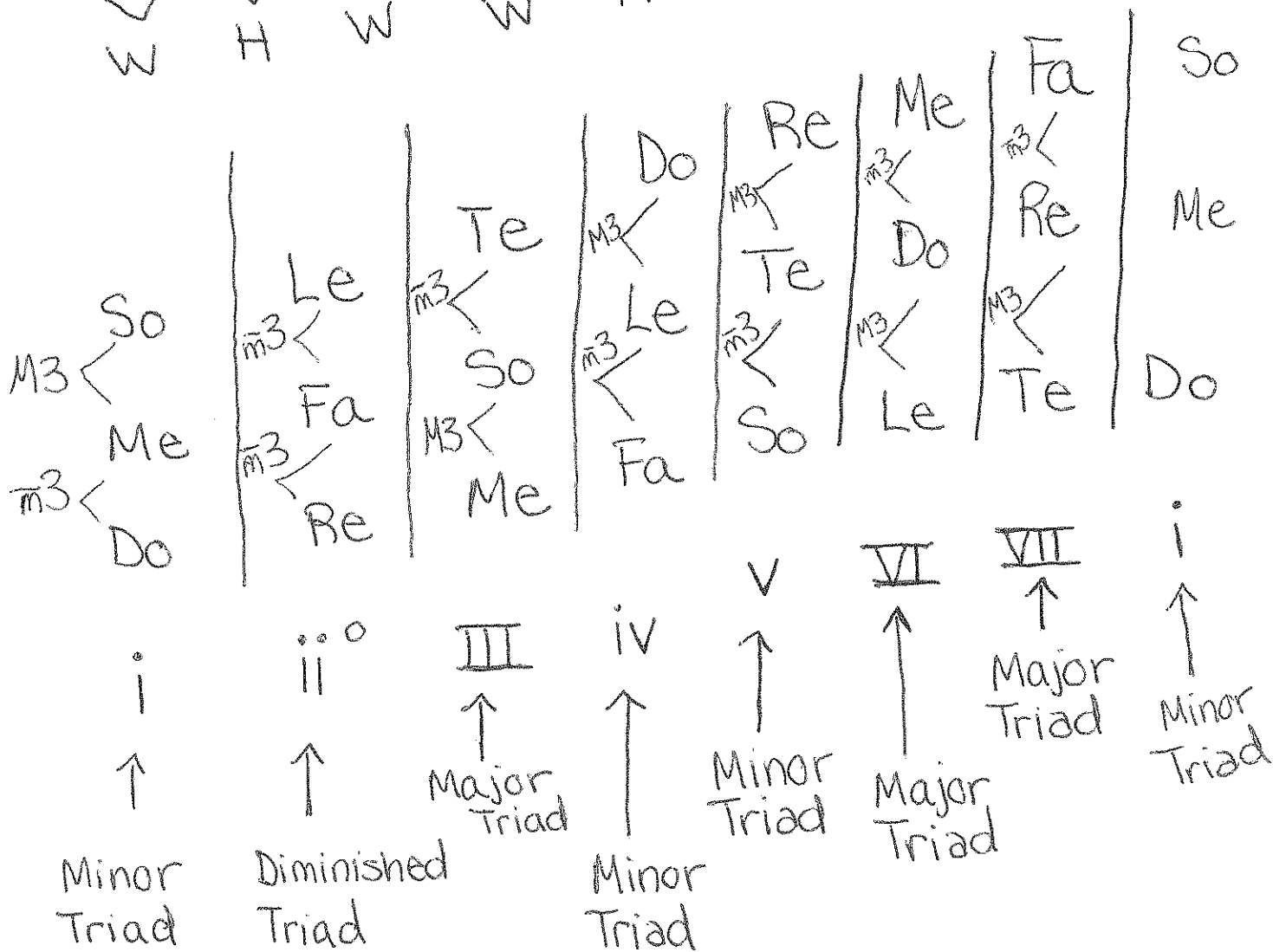
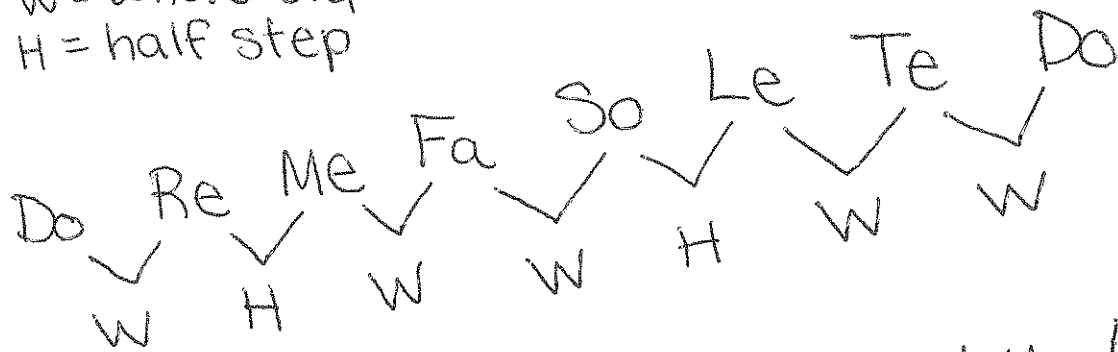
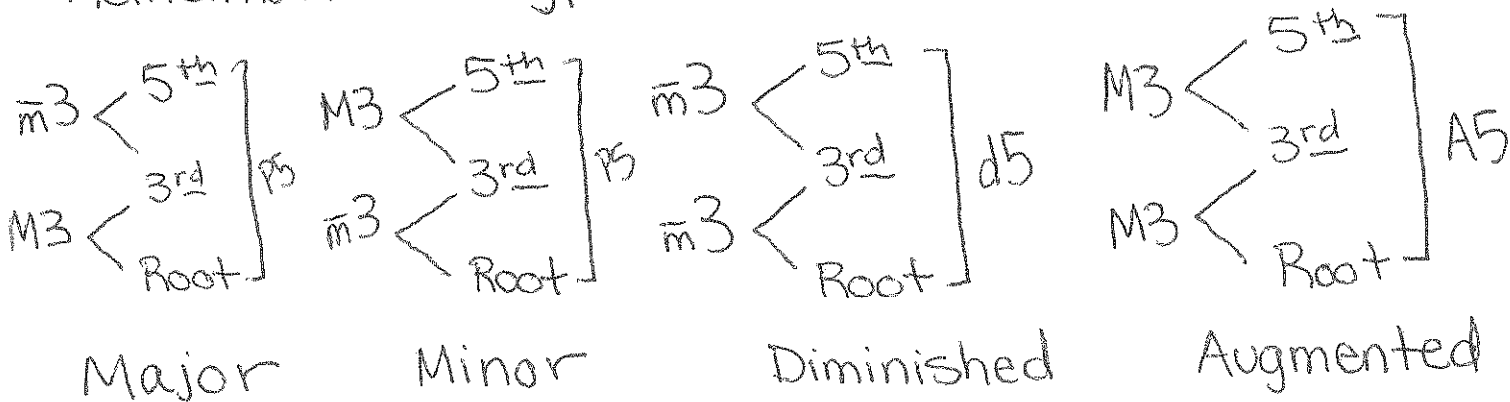


Diatonic Triads in a Minor Key

W = whole step
H = half step

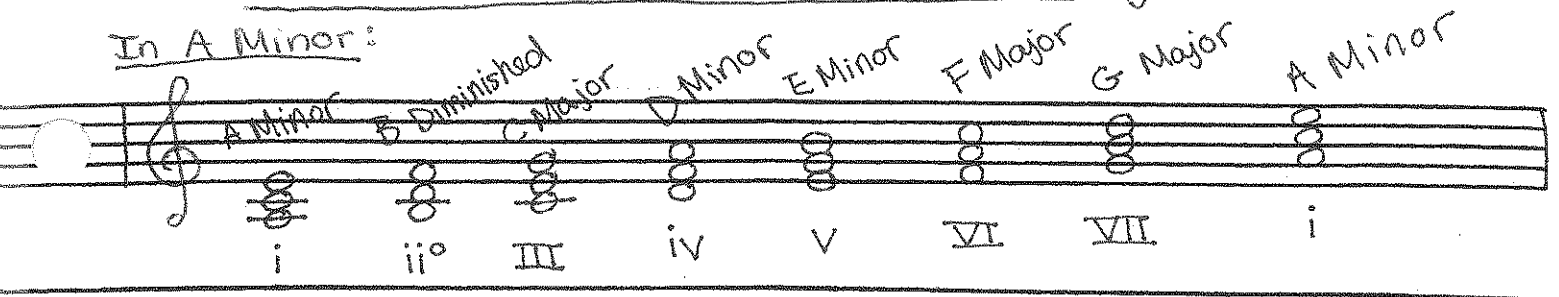


Remember the types of triads:



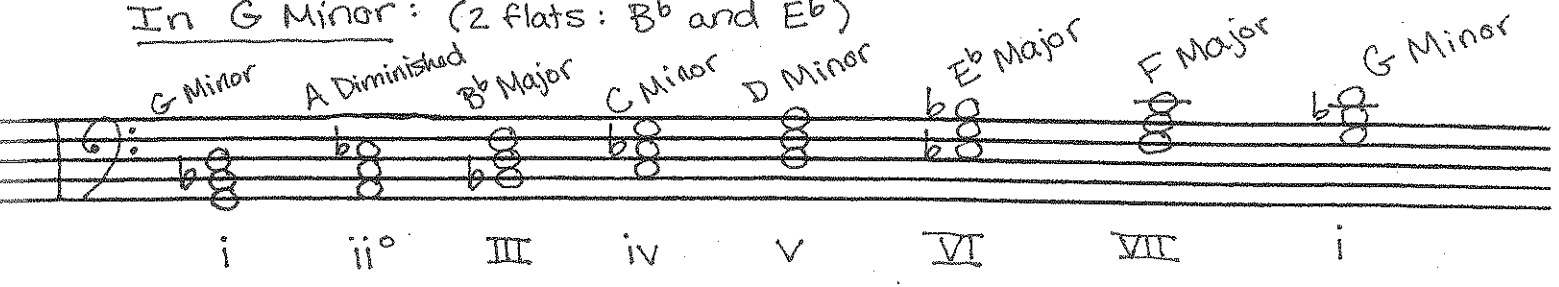
Diatonic Triads in Minor Keys

In A Minor:



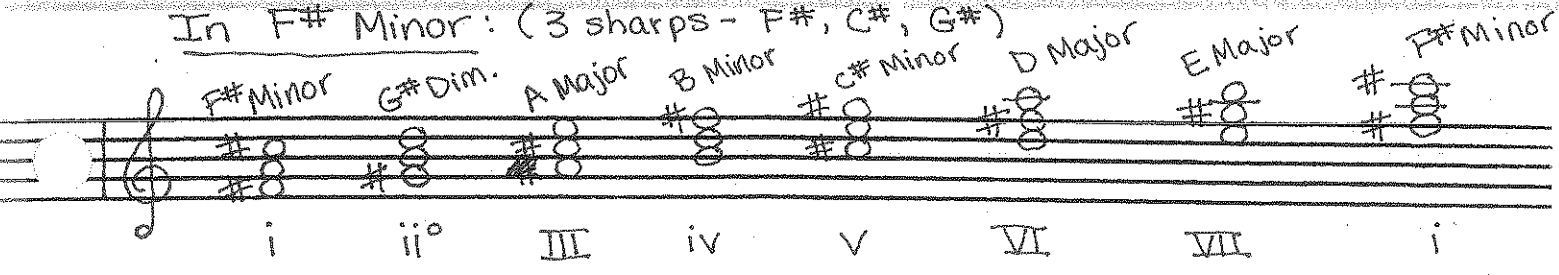
A Minor (i) B Diminished (ii°) C Major (III) D Minor (iv) E Minor (v) F Major (VI) G Major (VII) A Minor (i)

In G Minor: (2 flats: B^b and E^b)



G Minor (i) A Diminished (ii°) B^b Major (III) C Minor (iv) D Minor (v) E^b Major (VI) F Major (VII) G Minor (i)

In F# Minor: (3 sharps - F#, C#, G#)



F# Minor (i) G# Dim. (ii°) A Major (III) B Minor (iv) C# Minor (v) D Major (VI) E Major (VII) F# Minor (i)